

MiniBlue® II

Hot Melt Dispensing Applicators

Industry-best service life and performance combine with application flexibility to increase productivity and lower operating costs



MiniBlue II low-profile (LP) applicator



MiniBlue II standard body applicator



MiniBlue II SureBead® applicator



MiniBlue II slim line applicator

MiniBlue II applicators set the industry standard for service life, speed, reliability and performance, reducing maintenance and downtime.

Features

- Two interchangeable module technologies are available for MiniBlue II applicators:
 - Enhanced ball-and-seat (BAS) design for excellent cutoff in the MiniBlue II BAS module
 - Patented, self-cleaning, integrated needle and reduced cavity in the MiniBlue II SureBead module
- Both module types incorporate patented Reflex™ seal technology for superior life
- MiniBlue II BAS modules accept easily removable Nordson Saturn nozzles
- MiniBlue II SureBead modules are available in sizes ranging from .008 in. to .040 in. for maximum application flexibility
- MiniBlue II applicators are available in the following formats:
 - Compact, energy efficient single-module slim line
 - Single module and configurable standard body
 - Direct fit retrofit for Best Choice™ SolidBlue® S and SolidBlue A applicators
 - Multi-module Low-Profile (BAS module only)
- Engineered, high-temperature plastic insulating covers are standard on MiniBlue II slim line applicators

- All applicators include Saturn® filters
- Water-wash versions are also available

Benefits

- Module and solenoid combination reduces the performance gap between pneumatic and electric applicators
- Longest operating life of any pneumatic applicator in the packaging industry; reduces replacement frequency and cost
- Fast cycle times and superior high-speed performance
- Stronger air-open/air-close force promotes sharp cutoff, cleaner adhesive patterns and high-speed operation
- Enables savings using intermittent bead dispensing
- Reduces energy use up to 38 percent and improves safety by minimizing exposure to hot surfaces
- Virtually eliminates nozzle clogging, minimizing downtime and maintenance with MiniBlue II SureBead module



MiniBlue® II Hot Melt Dispensing Applicators

Specifications

Operating Temperature

205° C (400° F) maximum

Operating Air Pressure

3.4 to 5.5 bar (50 to 80 psi)

Working Hydraulic Pressure

103 bar (1500 psi) maximum

Nozzles Standard

Saturn, single orifice
(controlled engagements)

Nozzles MiniBlue II SureBead

Orifice Sizes

.008, .012, .016, .020, .032, .040

Saturn Solenoid Valves

24 VDC, high-temperature,
factory-installed

Electrical Service

240 VAC, 50/60 Hz;
200 VAC, 50/60 Hz optional

Maximum Cycle Rate

8000/min

Minimum Bead Deposition

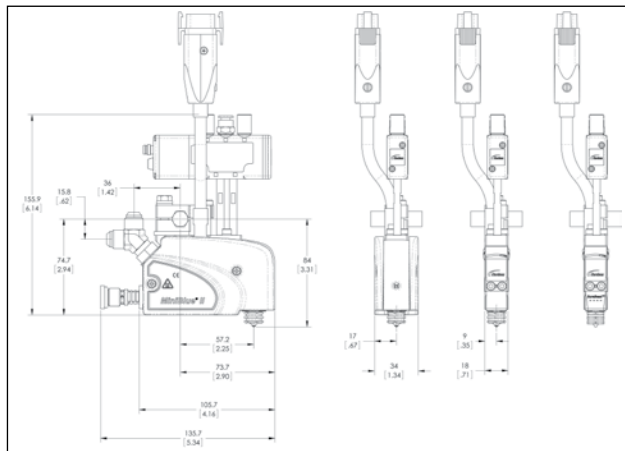
2ms (adhesive dependent)

Adhesive Viscosity Range

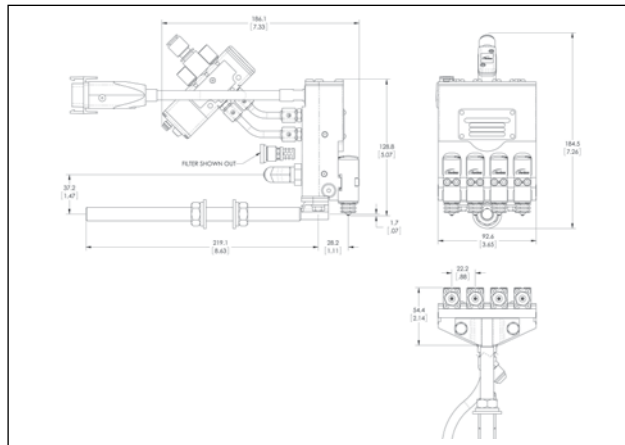
500 to 1500 cps optimal
500 to > 5000 cps capability

Protection Class

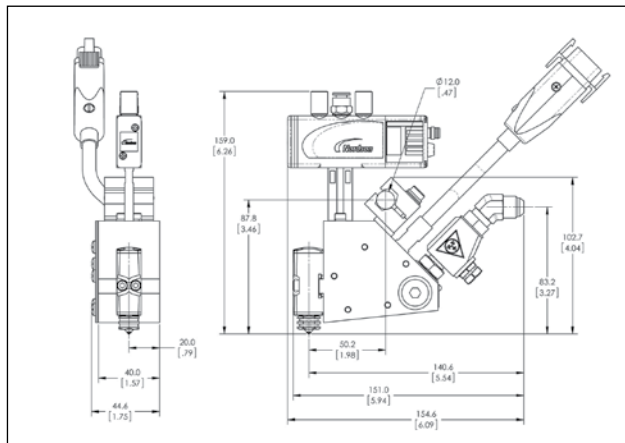
IP54; (IP56 optional)



MiniBlue II slim line applicators (with and without insulating covers) and Saturn SP solenoid



MiniBlue II low-profile applicator with Saturn SP solenoid



MiniBlue II standard body applicators (single module and configurable) with 3 options:

- Original MiniBlue II applicator
- Retrofit for Best Choice SolidBlue S*
- Retrofit for Best Choice SolidBlue A*

*Retrofitted match bracket-to-nozzle dimensions from Best Choice applicators

For more information, speak with your Nordson representative or contact your Nordson regional office.

United States

Duluth, Georgia
(800) 683-2314 Phone
(866) 667-3329 Fax

Canada

Markham, Ontario
(800) 463-3200 Phone
(905) 475-8821 Fax

Europe

Erkrath, Germany
(49) 211-9205-0 Phone
(49) 211-254658 Fax

Japan

Tokyo, Japan
(81) 3-5762-2700 Phone
(81) 3-5762-2701 Fax

Asia/Australia/ Latin America

Amherst, Ohio
(440) 985-4797 Phone
(440) 985-1096 Fax

Find us on:



PKL-13-5819
Issued 8/13
© 2013 Nordson Corporation
All Rights Reserved.
Printed in U.S.A.
Nordson reserves the right to make design changes between printings.