

# VersaBlue<sup>®</sup>

Adhesive Melters

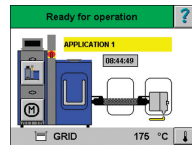
## 50 and 100 liter melters

### VersaBlue melters:

- Install quickly and easily
- Provide easy day-to-day operation
- Simplify routine maintenance
- Maximize uptime
- Serve a broad range of industries

Nordson VersaBlue melters are designed for precise, demanding hot melt adhesive applications. A choice of metering spur-gear pumps with variable-speed AC motors satisfies a wide range of manufacturing requirements. A grid and reservoir tank design reduces adhesive degradation while maximizing adhesive throughput. A powerful industrial PC provides full control of the adhesive system via a touch-screen interface.

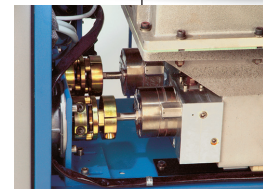
Graphical, touch-screen system control with status display of the tank, hose(s) and applicator(s)



Large, accessible tank opening allows easier filling and cleaning



Entry panels make access to melter components quick and easy



Pump shut-off valve and single-tool removal provide quick, easy pump replacement



Quick plug-in hose/gun pairs

**Specifications**

Type of System	Release-coated grid and reservoir Spur-gear pump with variable speed AC motor	
Number of Pumps	1 or 2	
Maximum Pump Rate <sup>1 &amp; 2</sup>	1.4 to 82 kg/hr (3 to 180 lb/hr)	
Filter Type	Saturn® basket-style filter	
Maximum Working Hydraulic Pressure	85 bars/8.5 MPa (1230 psi)	
Operating Temperature Range <sup>3</sup>	40 to 230°C (100 to 450°F)	
Ambient Temperature Range	0 to 40°C (32 to 104°F)	
Temperature Control Stability	±1°C (2°F)	
Electrical Service <sup>4</sup>	200 VAC 3 phase 50/60 Hz <sup>5</sup> 200 to 240 VAC 3 phase 50/60 Hz 380 to 415 VAC-Y (3 phase N/PE) 50/60 Hz 400 VAC 3 phase 50/60 Hz <sup>5</sup> 480 VAC 3 phase 50/60 Hz <sup>5</sup>	

<b>Maximum System Power Capacity</b>	<b>50 liter</b>	<b>100 liter</b>
2 hoses/applicators	14875 watts	23490 watts
4 hoses/applicators	18475 watts	27090 watts
6 hoses/applicators	22075 watts	30690 watts
8 hoses/applicators	N/A	34290 watts

**Input/Output Capability Standard** 7 outputs; 10 inputs

**Maximum Pressure Sensors** 2

	<b>50 liter</b>	<b>100 liter</b>
<b>Melter Dimensions (W x H x D)</b>	1000 x 1382 x 782 mm (39.4 x 54.4 x 30.8 in)	1100 x 1382 x 1035 mm (43.3 x 54.4 x 40.8 in)

<b>Installation Dimensions (W x H x D)</b>	1760 x 1661 x 1125 mm (69.3 x 65.4 x 44.3 in)	2111 x 1565 x 1496 mm (83.1 x 61.6 x 58.9 in)
--	--	--

**Protection** IP54

	<b>VersaBlue 50</b>	<b>VersaBlue 100</b>
<b>Holding Capacity</b>	50 L (3051 in <sup>3</sup> ) 48.5 kg (106.7 lb)	100 L (6102 in <sup>3</sup> ) 97.0 kg (213.4 lb)
<b>Throughput (per hour)<sup>1</sup></b>	75 kg (165 lb)	150 kg (330 lb)
<b>Melt Rate (per hour)<sup>1</sup></b>	50 kg (110 lb)	100 kg (220 lb)
<b>Weight (empty)<sup>6</sup></b>	275 kg (606 lbs)	360 kg (798 lb)
<b>Number of Applicators</b>	2, 4 or 6	2, 4, 6 or 8

<sup>1</sup> Actual rates will vary depending on adhesive type, application parameters and input voltage.

<sup>2</sup> Range given is for maximum pump rate of various pumps available.

<sup>3</sup> High temperature unit available with operating range of 40 to 250°C (100 to 480°F).

<sup>4</sup> Permitted deviation from rated line voltage is ±10%.

<sup>5</sup> With integrated transformer.

<sup>6</sup> Weight depends on melter configuration.

Casters optional.

Profibus and Ethernet I/P optional.

Profibus is a registered trademark of Profibus International



**For more information, speak with your Nordson representative or contact your Nordson regional office.**

**United States**

Duluth, Georgia  
(800) 683-2314 **Phone**  
(866) 667-3329 **Fax**

**Canada**

Markham, Ontario  
(800) 463-3200 **Phone**  
(905) 475-8821 **Fax**

**Europe**

Erkrath, Germany  
(49) 211-9205-0 **Phone**  
(49) 211-254658 **Fax**

**Japan**

Tokyo, Japan  
(81) 3-5762-2700 **Phone**  
(81) 3-5762-2701 **Fax**

**Asia/Australia/  
Latin America**

Amherst, Ohio  
(440) 985-4797 **Phone**  
(440) 985-1096 **Fax**

**Find us on:**



PAL-14-5850  
Issued 3/14  
© 2003; 2014 Nordson Corporation  
All Rights Reserved.  
Printed in U.S.A.  
Nordson reserves the right to make design changes between printings.