

VersaBlue® XN Series

Adhesive Melters

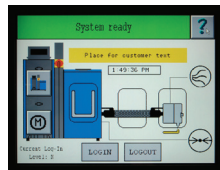
50, 100 and 200 liter melters

VersaBlue XN series melters:

- Increase system flexibility
- Simplify system configuration and upgrades
- Maximize uptime
- Install quickly and easily

VersaBlue XN series melters provide precise, dependable hot melt adhesive delivery in a flexible platform that offers up to two melt tanks for dispensing different adhesives. A comprehensive selection of pump choices and sizes meets demanding manufacturing requirements and includes up to eight single-stream or eight dual-stream metering spur-gear pumps with variable-speed AC motors. Modular design allows users to upgrade and retrofit configurable options on-site. An Allen-Bradley® ControlLogix® or Siemens® S7 PLC provides total adhesive system control for easy operation and integration.

Single-point system operation integrates auxiliary temperature, motor and pressure controls to reduce complexity



Grid and reservoir reduce adhesive degradation and maximize throughput

Twin-tank capability enhances application flexibility



Open access provides quick and easy servicing



Quick-disconnect hose/gun power connectors simplify installation



VersaBlue® XN Series 50, 100 and 200 liter Adhesive Melters

Specifications

Type of System	Release-coated grid and reservoir Spur-gear pump with variable AC motor
Number of Pumps	Up to 8 single-stream or 8 dual-stream
Maximum Pump Rate ^{1,2}	1.4 to 82.1 kg/hr (3 to 180 lb/hr)
Hose Outputs per Metered Stream	2
Number of Adhesive Hoppers	Up to 2
Number of External Motor Controllers	Up to 6
Maximum Working Hydraulic Pressure	85 bars/8.5 MPa (1230 psi)
Operating Temperature Range	40 to 230° C (100 to 450° F)
Ambient Temperature Range	0 to 50° C (32 to 122° F)
Temperature Control Stability	±1° C (2° F)
Electrical Service ³	200 to 240 VAC 3 phase 50/60 Hz 380 to 415 VAC-Y (3 phase N/PE) 50/60 Hz
Maximum External Temperature Control Zones	52
Maximum Internal Pressure Sensors	16 pre-filter and 16 post-filter
Maximum External Pressure Sensors	16
Protection	IP 54

	50-L Tanks	100 L Tanks	200 L Tanks
Holding Capacity	50 L (3051 in ³) 48.5 kg (104.7 lb)	100 L (6102 in ³) 97 kg (213 lb)	200 L (12,204 in ³) 194 kg (426 lb)
Throughput (per hour) ¹	75 kg (165.4 lb)	150 kg (330 lb)	300 kg (660 lb)
Melt Rate (per hour) ¹	50 kg (110.2 lb)	100 kg (220 lb)	200 kg (440 lb)

Tanks	Melter Dimensions W x H x D mm (in.)	Service/Installation Envelope W x H x D mm (in.)	Weight Empty kg (lb) ⁴	Maximum Melter Power (W)
Single 50	1460 x 2015 x 1250 (57.5 x 79.3 x 49.2)	1932 x 2244 x 1885 (76.1 x 88.3 x 74.2)	620 (1366.9)	58100
Single 100	1460 x 2015 x 1500 (57.5 x 79.3 x 59.1)	2182 x 2244 x 2135 (85.9 x 88.3 x 84.1)	820 (1807.8)	68700
Single 200	1460 x 2015 x 2400 (57.5 x 79.3 x 94.5)	2181 x 2244 x 3035 (85.9 x 88.3 x 119.5)	1470 (3240.8)	82900
Twin 50/50	1460 x 2015 x 1900 (57.5 x 79.3 x 74.8)	1932 x 2244 x 2535 (76.1 x 88.3 x 99.8)	970 (2138.5)	72800
Twin 50/100	1460 x 2015 x 2150 (57.5 x 79.3 x 84.6)	2182 x 2244 x 2785 (85.9 x 88.3 x 109.6)	1170 (2579.4)	81350
Twin 100/100	1460 x 2015 x 2400 (57.5 x 79.3 x 94.5)	2182 x 2244 x 3035 (85.9 x 88.3 x 119.5)	1370 (3020.3)	89900

¹ Actual rates will vary depending on adhesive type, application parameters and input voltage.

² Range given is for maximum pump rate of various pumps available.

³ Permitted deviation from rated line voltage is ±10 percent.

⁴ Weight depends on melter configuration.

Allen-Bradley and ControlLogix are registered trademarks of Rockwell Automation, Inc.

Siemens is a registered trademark of Siemens AG.

Nordson Corporation
11475 Lakefield Drive
Duluth, GA 30097-1511

(800) 683-2314
nordson.com/hotmelt

For more information, speak with your Nordson representative or contact your Nordson regional office.

United States

Duluth, Georgia
(800) 683-2314 **Phone**
(866) 667-3329 **Fax**

Europe

Lüneburg, Germany
(49) 4131-894-0 **Phone**
(49) 4131-894-149 **Fax**

Japan

Tokyo, Japan
(81) 3-5762-2700 **Phone**
(81) 3-5762-2701 **Fax**

Asia/Australia/

Latin America
Amherst, Ohio
(440) 985-4496 **Phone**
(440) 985-1096 **Fax**

Find us on:



NWL-11-5729
Reissued 9/12
© 2004, 2012 Nordson Corporation
All Rights Reserved.
Printed in U.S.A.
Nordson reserves the right to make design changes between printings.

